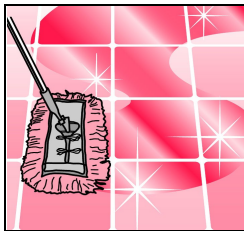


Mopy

Dust Mop & Cloth Treatment

TECHNICAL DATA SHEET



DESCRIPTION

MOPY is a high-quality dust mop treatment, based on the magnetic built-in dust drawing & holding power of special mineral oils, which allows mops and cloths to aggressively attract and retain huge quantities of dust and grit that can attack the shine of floors and surfaces, for more efficient cleaning and shorter mopping time.

MOPY grabs onto and traps dust in dust mops or cloths to prevent its scattering and resettling on cleaned surfaces. It can also confer to mops, many times their dust holding capacity, without harming floors or other hard surfaces.

MOPY not only draws dust particles into the mops fibers, but actually forms compact dust balls that are easily shaken off after use.

MOPY is ideal for maintaining all types of flooring and hard surfaces like hardwood floors, linoleum, formica, tile, vinyl, furniture, blinds, window frames, auto interiors, shelves and concrete. Moreover, **MOPY** won't leave floors slippery after use. **MOPY** reduces airborne dust, bacteria and viruses which circulate when sweeping compounds, push brooms and untreated cloths are used.

DIRECTIONS FOR USE

Spray **MOPY** directly onto mop or dust cloth with a hand sprayer. Re-apply as needed but moisten only, never wet. Leave mops freshly treated with **MOPY** to dry overnight. For quick use: leave **MOPY** treated mops for at least 1hr. before use. Wash dirty mops treated with **MOPY** with a soapy solution and rinse clean. Comb mops when wet to straighten mop ends.

Consult a GILCO representative for more information.

PROPERTIES

Appearance :	Liquid
pH (1% solution) :	N/A
Solubility :	N/A
Odor :	Odorless
Color	Transparent

PRECAUTIONS

PACKAGING CODE

4 L
 4 x 4 L
 20 L
 210 L

Do not use on food contact surfaces. Do not store in food processing or food storage areas. Do not contaminate food products.